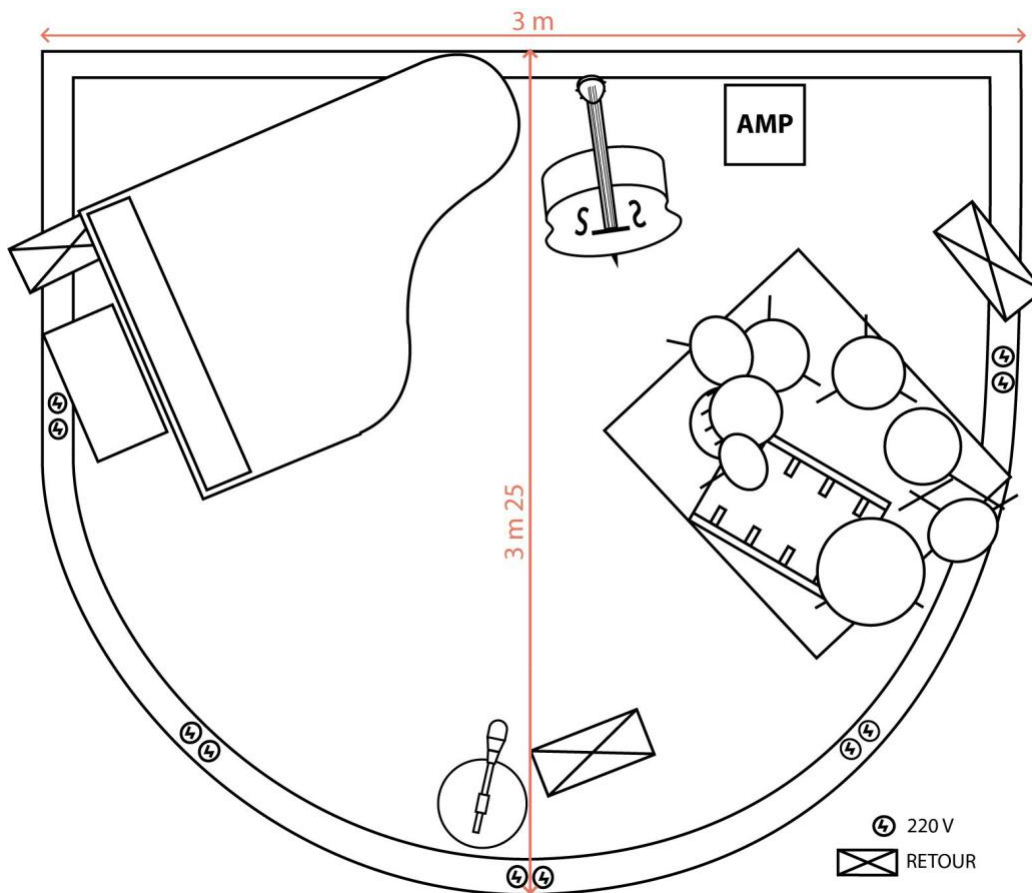


## Technical Rider - Le Duc des Lombards (2023)

Duc Des Lombards Stage Manager: Aymeric PEIXOTO

Tel: +33 (0)6 86 54 92 99 – Email: [apeixoto@ducdeslombards.com](mailto:apeixoto@ducdeslombards.com)

### STAGE PLAN:



### Backline:

**Yamaha CF6 Piano**

**Fender Rhodes 73 Stage Mark 2 model**

**Yamaha Absolute Maple Hybrid**

- 18"x14" and 20"x16" Bass drums
- 10"x7,5" and 12"x8" Mounted toms, 14"x14" and 16"x15" Floor toms
- 14"x 6" Snare drum
- 4 Cymbal stands
- 1 Snare drum stand
- 1 Hi-Hat stand
- 1 Kick pedal
- **1 Drum stool**

**1 Romanian Double Bass (French Diapason), Fishman « Full Circle » pickup.**

**Bass amps: 1 Markbass Ninja/ 1 Ampeg SVT6Pro + 1 Ampeg 4x10"HE.**

**Guitar amps: 1 Fender Twin Reverb / 1 Fender Deluxe.**

## **Sound:**

### **PA System:**

XTA processor, Amplifier LA4 x2, L-Acoustics 8XT x6 + SB15P, Recalls : Yamaha MSP3

**Limiting system : AMIX série SNA**

**Stage Monitors: L-Acoustics 108p (4 Mixes, 4 Wedges)**

**Sound board: Yamaha CL1 + RIO1608 D2**

16 inputs and 4 output « Deslink » patch

### **Microphones:**

- 3 DPA 4099 (2 pianos, 1 contrebasse)
- 6 Shure SM58
- 2 Shure Beta 58
- 2 Shure SM57
- 1 Shure Beta 91
- 1 APEX 125
- 2 Beyerdynamic M88 TG
- 1 Neumann KMS 105 Silver
- 2 Lewitt LCT441 Flex
- 2 Lewitt LCT140
- 1 AKG C414XLII matched pair
- 1 Sennheiser MD441-U
- 1 Sennheiser E609
- 4 Sennheiser E-614
- 6 DI Boxes BSS

8 Tall microphone boom stands

4 Small microphone stands

1 Round base stand

1 Goose neck with table clamp

2 K&M Stereo Bar

5 Stagg music stands

2 Adam & All Music stands

5 music stands lights

1 Double K&M brace X stand

2 220/110V converters

US Outlets

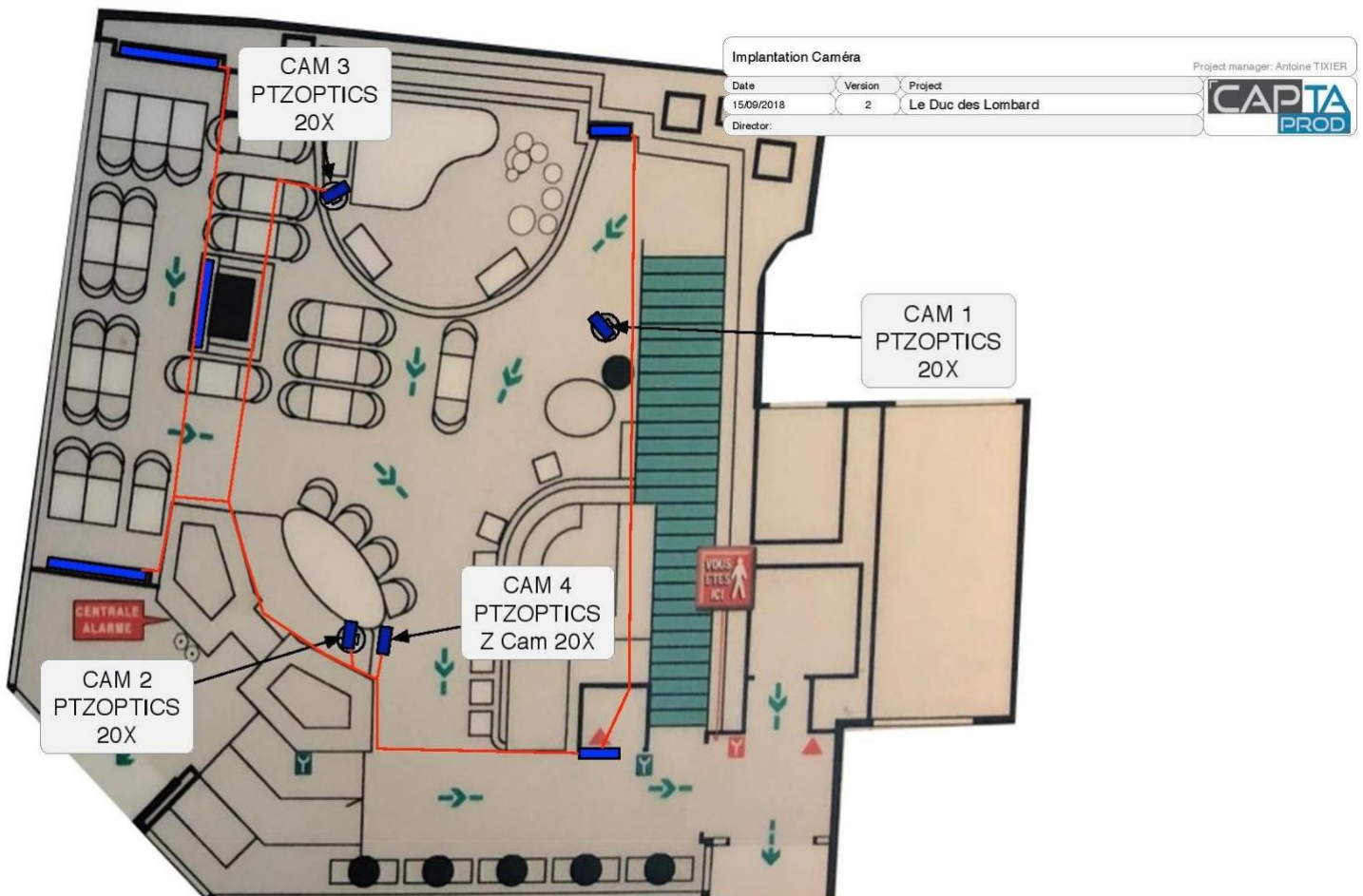
220v extensions and outlets

## Video capture:

For any information about our prices see the attached PDF appendix.

### Technical specs:

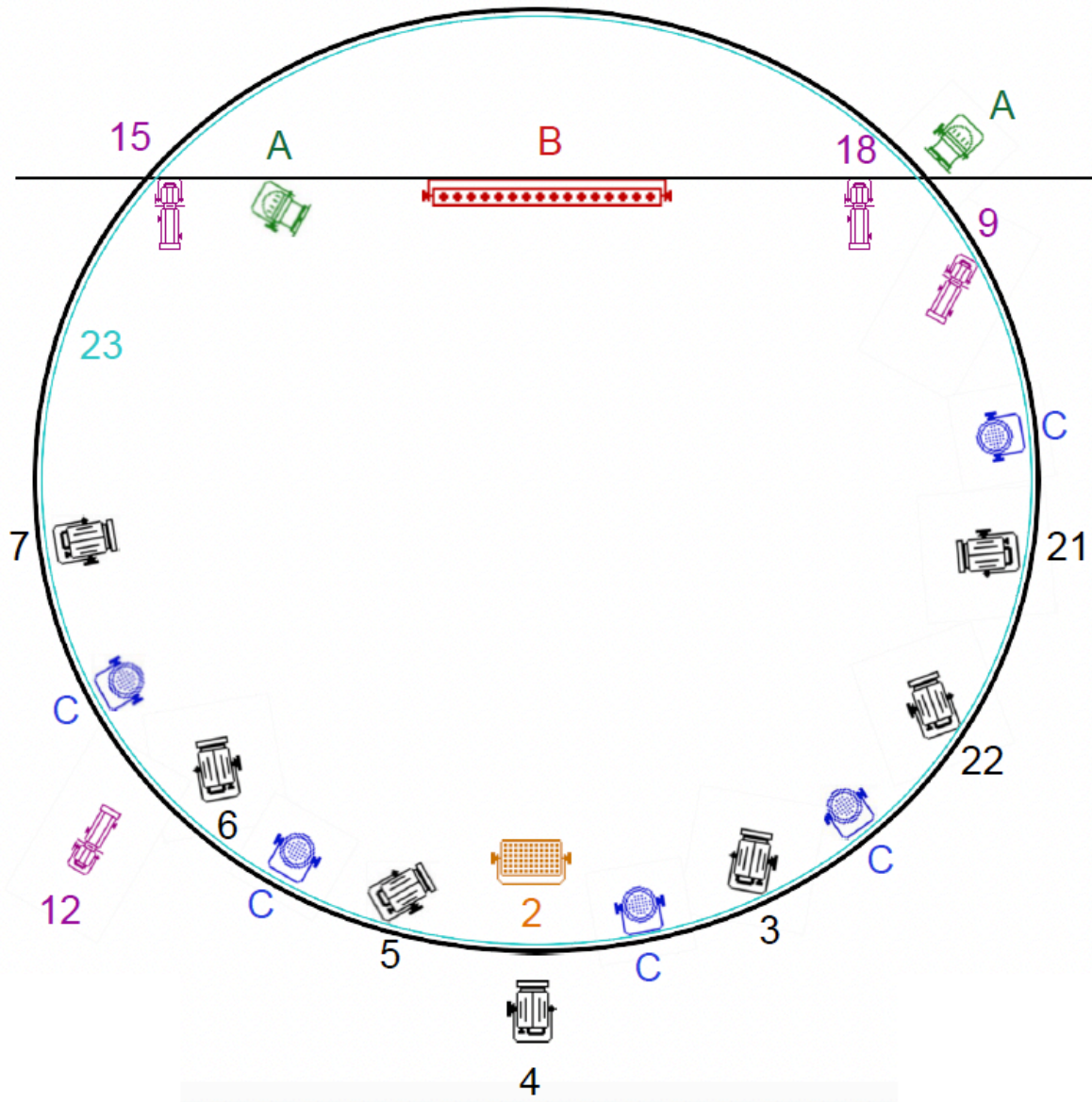
- **4 Camera HD PTZ Optics:**
  - 1 fixed camera (large shot).
  - 3 rotating cameras (1 front, 1 opposite prompt side and 1 prompt side).  
*About 15 different shots.*
- **Video format H.264**
- Stereo mix on a dedicated bus (AAC 48 KHz, 24 bit).
- Record and montage made live into Softron Movie Recorder Express.



# Scenic lighting:

- Plan

Back of the stage



Opposite Prompt Side

Prompt Side

**Dimmers Patch:**

<b>1-24</b>	<b>25-49</b>
2: LED striplights panel for the Lead	<b>Two spotlights (stage background) (A)</b>
3: Drummer Front Prompt Side	1: Green
4: Back of the stage (on the bassist)/ Center Front	2: Blue
5: Front Scene Prompt Side	3: White
6: Piano Front Opposite Prompt Side	<b>Stagebar Led (stage background) (B)</b>
7: Pianist's back	6: Red
9: Profile Spot Drummer's back	7: Green
12: Profile Spot: Duc Des Lombards Logo	8: Blue
15: Profile Spot Back lighting Opposite Prompt Side	9: White
18: Profile Spot Back lighting Prompt Side	10: Orange
21: Pianist's face	11: Violet
22: Drummer's face	<b>Satellites de leds (C)</b>
23: LED Gardland	18: Red
	19: Green
	20: Blue
	21: White

**Machines references:**

- 9 PAR lights: 50 watts ADJ Encore FR50z
  - 4 Profile spots: 32W ADJ Ikon Profile
  - 5 PAR lights: 7 leds RGBW IP65 – CLF Quad Color Mini Par
  - 2 Spotlights: Showtec Helios 200 COB Q4 RGBW
  - 1 LED Stagebar
  - 1 LED striplight panel
  - 1 LED Garland
- 1 Smart Fade 1248 lighting board