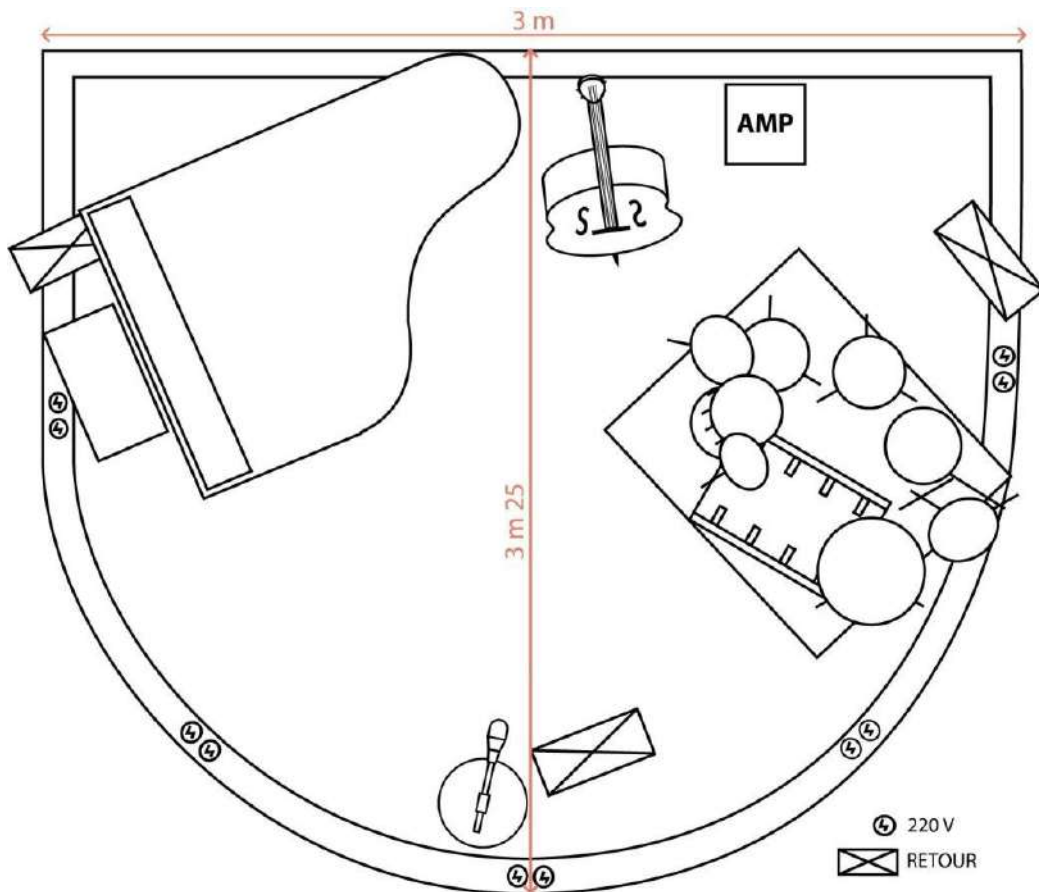


LE DUC DES LOMBARDS

TECHNICAL RIDER (2026)

STAGE PLAN:



Backline:

Yamaha CF6 Piano

Fender Rhodes 73 Stage Mark 2 model

Drum Kit: Yamaha Absolute Maple Hybrid

- 18"x14" and 20"x16" Bass drums
- 10"x7,5" and 12"x8" Mounted toms, 14"x14" and 16"x15" Floor toms
- 14"x 6" Snare drum
- 4 Cymbal stands
- 1 Snare drum stand
- 1 Hi-Hat stand
- 1 Kick pedal
- 1 Drum stool

1 X Romanian Double Bass (French Diapason), Fishman « Full Circle » pickup.

Bass amps:

1 X Markbass Little Mark 58R combo
1 X Ampeg SVT6Pro + 1 Ampeg 4x10"HE.

Guitar amps:

1 X Fender Twin Reverb
1 X Fender Deluxe.

Sound:

PA System:

XTA processor, Amplifier LA4 x2, L-Acoustics 8XT x6 + SB15P,
Recalls : Yamaha MSP3

Limiting system : AMIX série SNA

Stage Monitors: L-Acoustics 108p (4 Mixes, 4 Wedges)

Sound board: Yamaha CL1 + RIO1608 D2

16 inputs and 4 output « Deslink » patch

Microphones:

- 3 DPA 4099B
- 6 Shure SM58
- 2 Shure Beta 58
- 4 Shure SM57
- 1 Shure Beta 91
- 1 APEX 125
- 1 Beyerdynamic M88 TG
- 2 Lewitt LCT441 Flex
- 2 Lewitt LCT140
- 1 AKG C414XLII matched pair
- 1 Sennheiser MD441-U
- 1 Sennheiser E609
- 4 Sennheiser E-614
- 5 DI Boxes BSS AR133

Extra equipments:

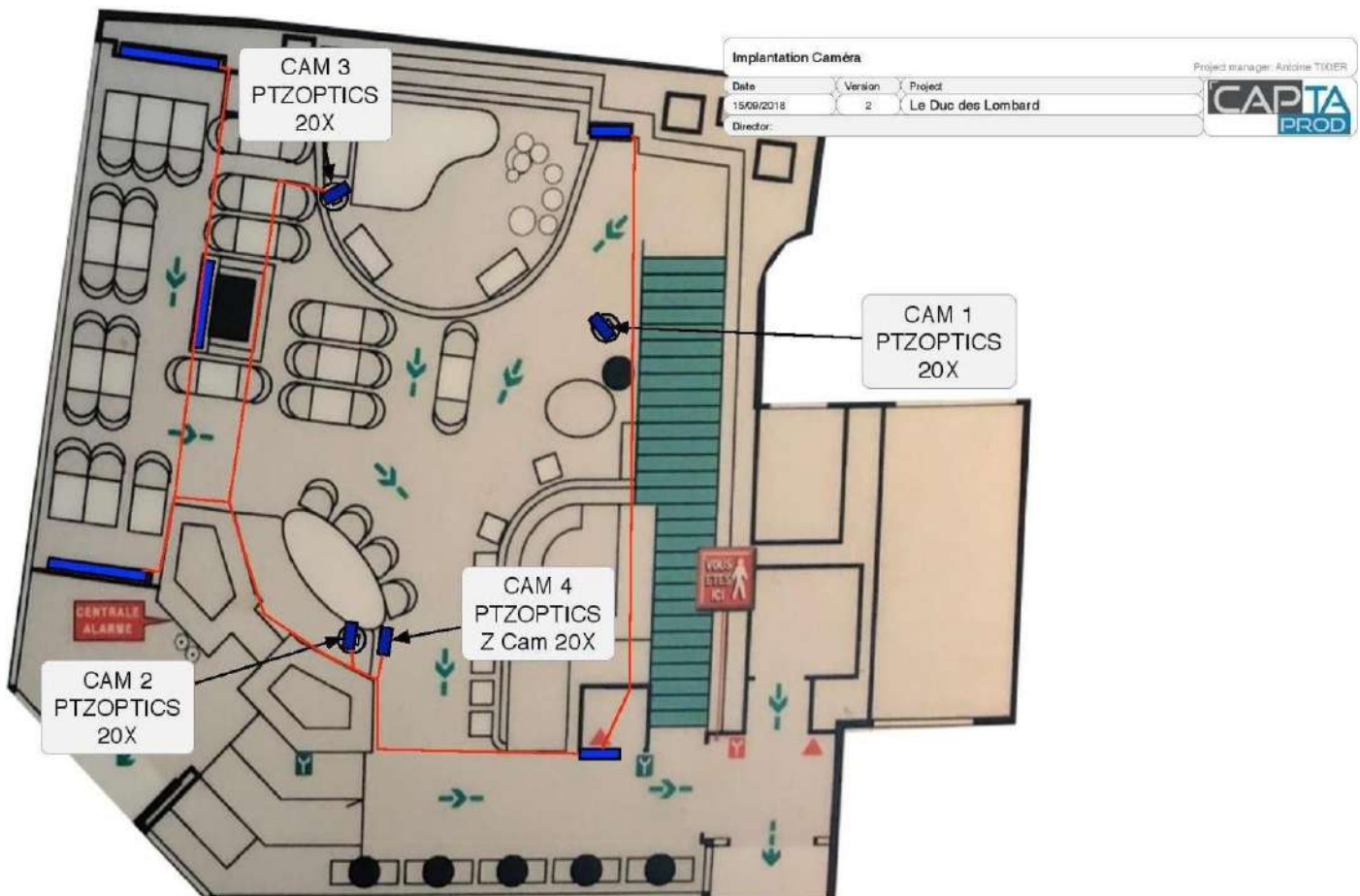
- 8 X Tall microphone boom stands
- 4 X Small microphone stands
- 1 X Round base stand
- 1 X Goose neck with table clamp
- 2 X K&M Stereo Bar
- 5 X Stagg music stands
- 2 X Adam & All Music stands 5 music stands lights
- 1 X Double K&M brace X stand
- 2 X 220/110V converters US Outlets
- 1 X 220v extensions and outlets

Video capture:

For any information about our prices see the attached PDF appendix.

Technical specs:

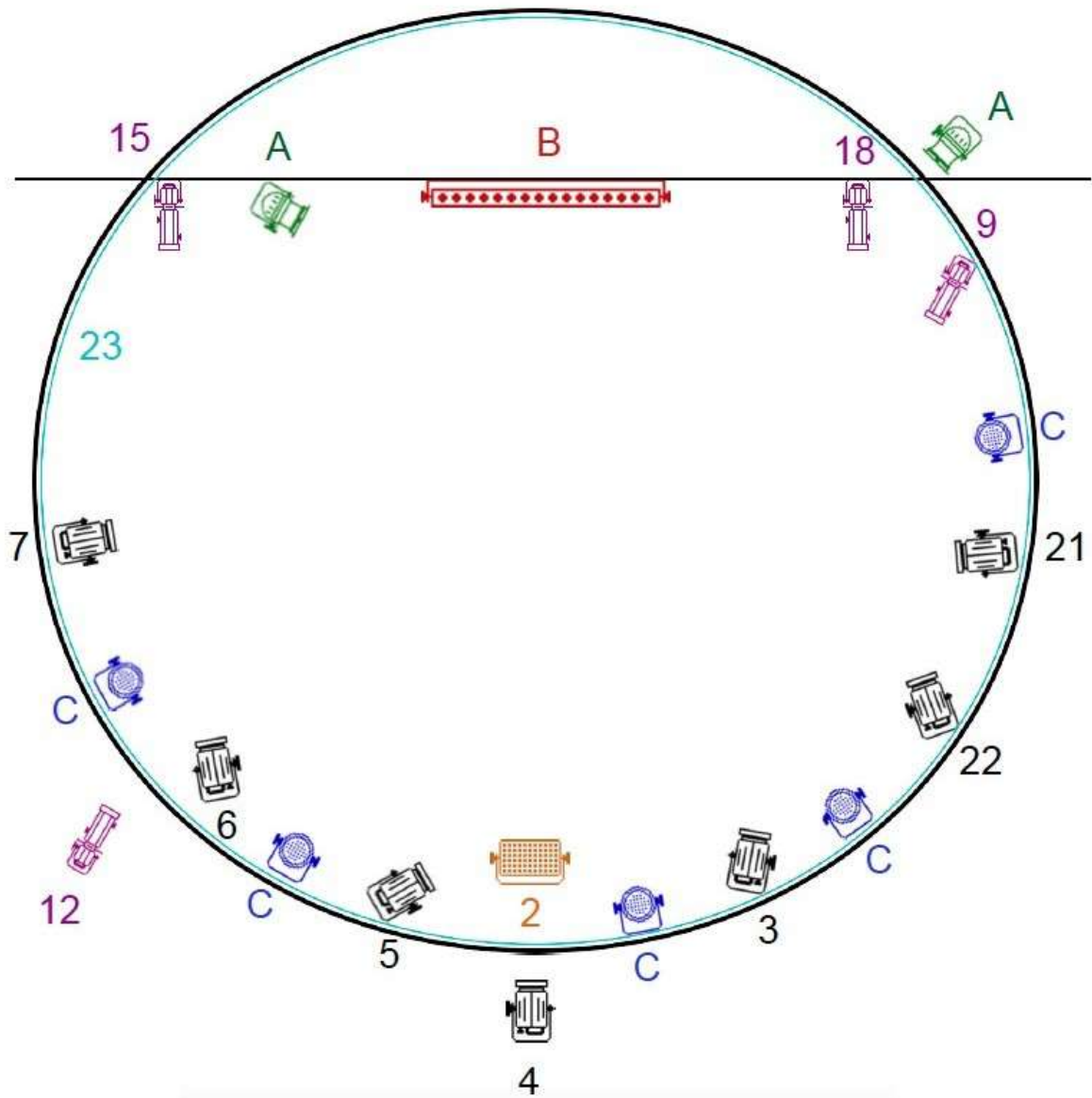
- **4 Camera HD PTZ Optics:**
 - 1 fixed camera (large shot).
 - 3 rotating cameras (1 front, 1 opposite prompt side and 1 prompt side).
 - *About 15 different shots.*
- **Video format H.264**
- Stereo mix on a dedicated bus (AAC 48 Khz, 24 bit).
- Record and montage made live into Softron Movie Recorder Express.



Scenic lighting:

- Plan

Back of the stage



Opposite Prompt Side

Prompt Side

Dimmers Patch:

1-24	25-49
2: LED striplights panel for the Lead	Two spotlights (stage background) (A)
3: Drummer Front Prompt Side	1: Green
4: Back of the stage (on the bassist)/ Center Front	2: Blue
5: Front Scene Prompt Side	3: White
6: Piano Front Opposite Prompt Side	Stagebar Led (stage background) (B)
7: Pianist's back	6: Red
9: Profile Spot Drummer's back	7: Green
12: Profile Spot: Duc Des Lombards Logo	8: Blue
15: Profile Spot Back lighting Opposite Prompt Side	9: White
18: Profile Spot Back lighting Prompt Side	10: Orange
21: Pianist's face	11: Violet
22: Drummer's face	Satellites de leds (C)
23: LED Gardland	18: Red
	19: Green
	20: Blue
	21: White

Machines references:

- 9 PAR lights: 50 watts ADJ Encore FR50z
- 4 Profile spots: 32W ADJ Ikon Profile
- 5 PAR lights: 7 leds RGBW IP65 – CLF Quad Color Mini Par
- 2 Spotlights: Showtec Helios 200 COB Q4 RGBW
- 1 LED Stagebar
- 1 LED striplight panel
- 1 LED Garland

- **Chamsys QuickQ10**